

## MiniFlow liquid silage preservative applicator

The MiniFlow liquid applicator is our entry level system for applying preservative to various crops and is best suited for farmers who apply additives to less than 100 acres of silage a year.

The MiniFlow is for additives that have a typical application rate of 1- 2 litre per tonne.

It is a submersible pump and can be used for applying various types of liquid bacterial inoculant preservative to all types of crops.

The MiniFlow is suitable for most containers, 200 litre barrel or smaller and can also be supplied mounted in a 25, 60 or 100 Litre tank.

**The MiniFlow should NOT be used for propionic (propricorn) type acids.**

**Output range open flow : 0.5 - 3 litres per minute**

The MiniFlow is most suited to trailed forage harvesters, and balers but can also be used on self propelled forage harvester and forage wagons for small jobs.

Other applications the MiniFlow has been used for are: Applying supplements and preservative to Total Mixed Rations (TMR) in feeder wagons, seed dressings and insect repellents to stored grain.

## The basic MiniFlow kit

**Submersable pump**

**Variable in cab speed controller,**

**10 meters of tubing,**

**10 meters of electrical cable,**

**Single nozzle holder and a selection of jets.**



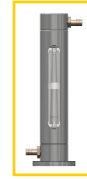
The Selmech's in cab variable speed controller enables the operator to set the out put of the pump easily and make manual adjustments for varying crop densities.

## Accessories

There are also a selection of optional accessories available depending on what type of equipment the MiniFlow will be used on. These include: -

### Graduated Flowmeters

A Flowmeter will give a visual indication of liquid flowing through the system highlighting a blockage or drop in pressure in the system.



### Anti-siphoning solenoid

If the additive tank is higher than the out-put, for example on a forage wagon, siphoning may occur. To stop this a solenoid assembly can be fitted.



### Pick-up reel micro switch

The micro switch is wired so when activated the supply is cut to the pump motor, turning off the pump. The switch should be mounted in an appropriate positions so that when the pick-up is raised the switch is operated to cut the supply.



## The MiniFlow and self-propelled or trailed forage harvester

If fitting to a self propelled harvester it should be remembered that we would recommend that it should be for limited use only. The addition of a Flowmeters with a graduated scale from 1-10 gives a good visual indication of additive flowing through the system.

**kit recommended for a self propelled forage harvesters. (limited use only)**

**Basic MinFlow kit with**

**Single jet pack**

**Flowmeter**

**kit recommended for a trailed forage harvesters.**

**Basic MinFlow kit with**

**Single jet pack**

**Flowmeter**

**Anti siphoning solenoid valve**

A typical setup for a trailed forage harvester is to mount the tank on the forager or the front of the tractor

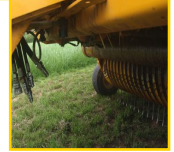


## The MiniFlow and forage wagons

Forage wagon pick-up rates can be quite high and the poor nature of the additive being mixed with the grass, as it would in a harvester, requires that you achieve a good coverage over the width of the swath. For these reasons we would recommend that the MiniFlow should be for limited use only with the twin jet option.



In almost all cases the tank will be mounted higher than the jets so it will be necessary to fit an anti siphoning solenoid valve assembly to prevent siphoning of the additive.



As with forage harvesters a Flowmeter is an optional extra that is well worth considering.

**Kit recommended for a Forage wagon. (limited use only)**

**MinFlow kit with**

**Twin jet pack**

**Anti siphoning solenoid valve**

**Flowmeter**

**Pick-up reel micro switch**

## The MiniFlow and balers

The MiniFlow should only be used for applying bacterial inoculant liquid preservative to baled silage.

As with the forage wagon it is important to provide a good coverage of the additive over the swath so a twin jet system should be used.

We would not recommend the MiniFlow for contractors and the MiniFlow **SHOULD NOT** be used to apply propionic (propricorn) type acids.

**Kit recommended for a balers.**

**MinFlow kit with**

**Twin jet pack**

**Anti siphoning solenoid valve,**

**Flowmeter**

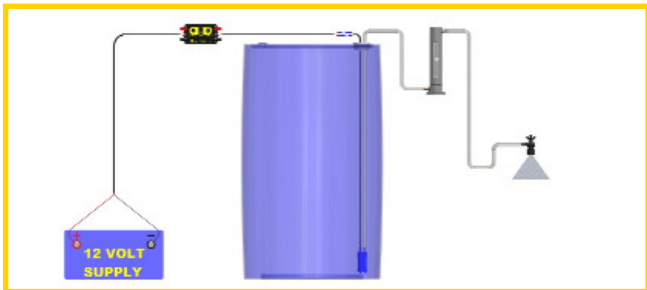
**Pick-up reel micro switch**



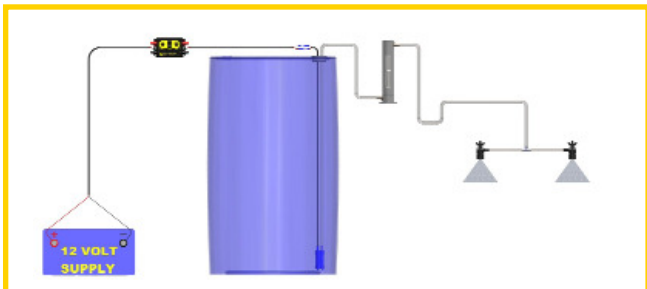
A typical set-up with balers it to mount a 200 litre barrel on the front link arms of the tractor or a suitable tank on the baler.

Quick pick guide							
Product code	SS6	SS38		SS48	SS49		SS9 SSX3
Product	MinFlow Liquid Applicator single jet	Miniflow Liquid Applicator single jet with 60 litre tank		MiniFlow Twin Jet Complete kit without tank	MiniFlow Twin Jet Complete kit with 60 lt tank		FlowMeter Anti Siphoning Solenoid Valve Assembly
Trailed forager	●	●					● ●
Self Propelled forager	●	●					● ●
Forage Wagon				●	●		
Big Baler				●	●		
Small Square Baler				●	●		

### Typical Set-up single jet



### Typical Set-up twin jet



## About Selmech Supplies

Manufacturers of Liquid and Powder Preservative Applicators for Grass Silage, Maize Silage, Hay and Corn Crimping

Selmech Supplies have been manufacturing cost effective preservative additive applicators for grass and maize silage for more than 25 years, supplying farmers, contractors and many of the largest manufacturers of additives in the UK, Europe and worldwide.

Selmech Supplies range of liquid and granular applicators are easily mountable and suit all types of self propelled and trailed forage harvester, forage wagons, balers and crimping applications.

We stock a wide range of spare parts and accessories so are able to offer comprehensive support to all our products.

### Warranty

All Selmech Applicators are guaranteed against failure which can be attributed to faulty workmanship for a period of six months from the date of delivery.

Selmech Supplies Ltd reserve the right to change its specifications at any time without notice, to allow for improvements or modifications to its design.



## MiniFlow liquid silage preservative applicator



The Miniflow is Selmech's entry level liquid applicator for applying preservative to various crops. The MinFlow is best suited to farmers who apply additives to less than 100 acres of silage a year.



**Selmech Supplies Ltd**

Tel: 01722 413440  
www.selmechsupplies.co.uk



19 Norton Enterprise Park, Whittle Road, Churchfields,  
Salisbury SP2 7YS

Tel: 01722 413440 - Fax: 01722 413466  
email: admin@selmechsupplies.co.uk

www.selmechsupplies.co.uk